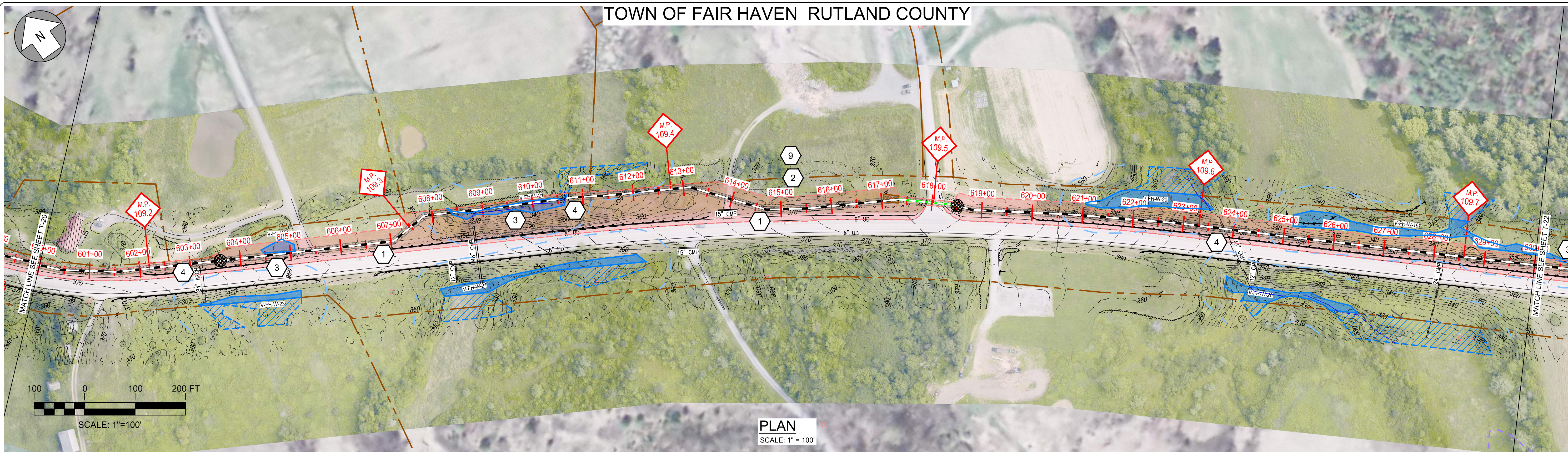
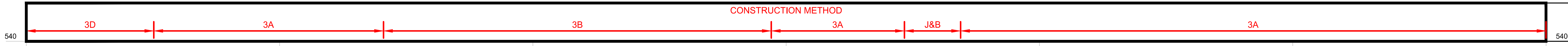


TOWN OF FAIR HAVEN RUTLAND COUNTY

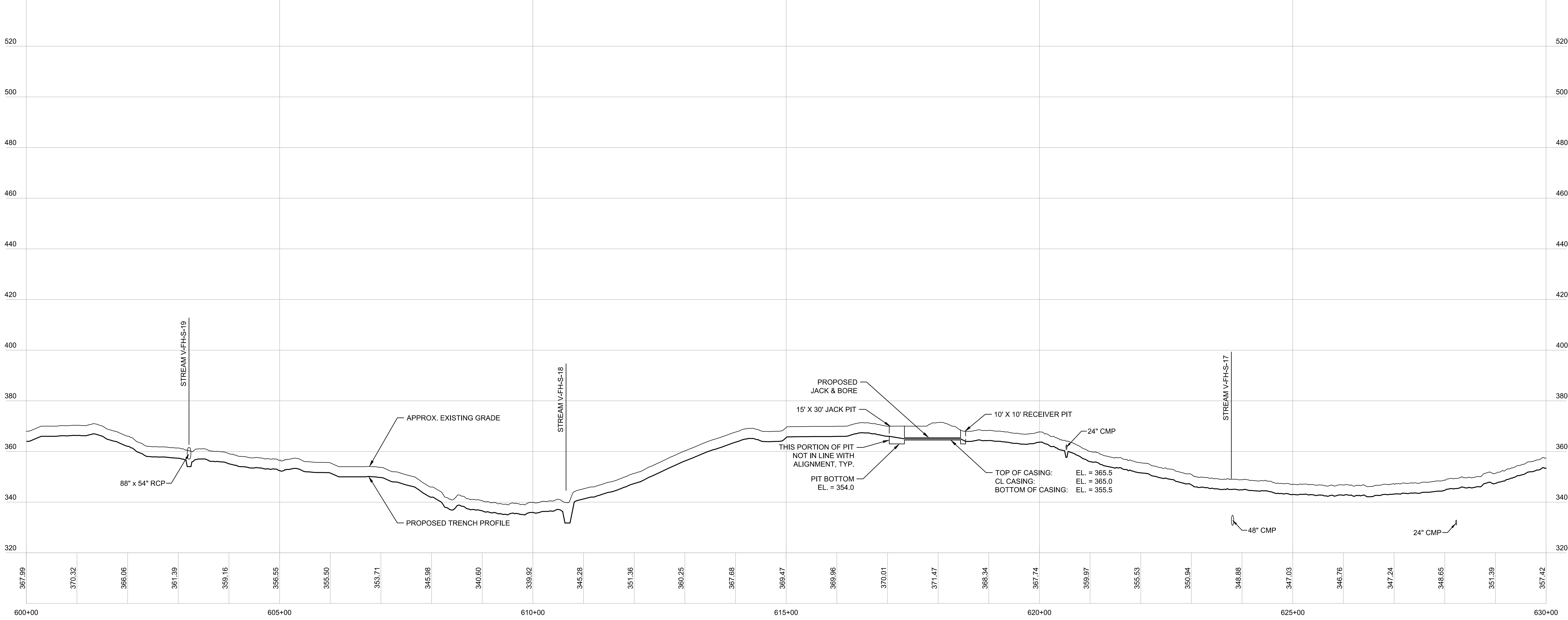


EPSC WORK NOTES

- 1 INSTALL STABILIZED CONSTRUCTION ENTRANCE. SEE TYPICAL DETAIL ON SHEET TD-7.
- 2 DEMARCATÉ LIMIT OF DISTURBANCE AND INSTALL PERIMETER CONTROLS IN ACCORDANCE WITH GENERAL EPSC NOTES AND CONSTRUCTION METHOD TYPICAL DETAILS ON SHEETS G-5 AND CM-1 THRU CM-5.
- 3 WETLAND CROSSING. SEE "TYPICAL WETLAND CONSTRUCTION" ON SHEET TD-7.
- 4 OPEN TRENCH EXCAVATION OR AT-CULVERT STREAM CROSSING TO BE COMPLETED IN ACCORDANCE WITH TYPICAL DETAILS ON SHEETS TD-4 AND TD-5.
- 5 REPLACE STREAM CULVERT IN ACCORDANCE WITH TYPICAL DETAILS ON SHEETS TD-3 AND TD-4.
- 6 DEMARCATÉ AND AVOID POTENTIAL ROOSTING TREE.
- 7 DEMARCATÉ AND AVOID RTE POPULATION.
- 8 IMPLEMENT RTE PLANT PROTECTION PLAN.
- 9 IMPLEMENT RTE ANIMAL PROTECTION PLAN.



REFER TO SHEETS CM-1 THROUGH CM-5 FOR CONSTRUCTION METHOD DETAILS.

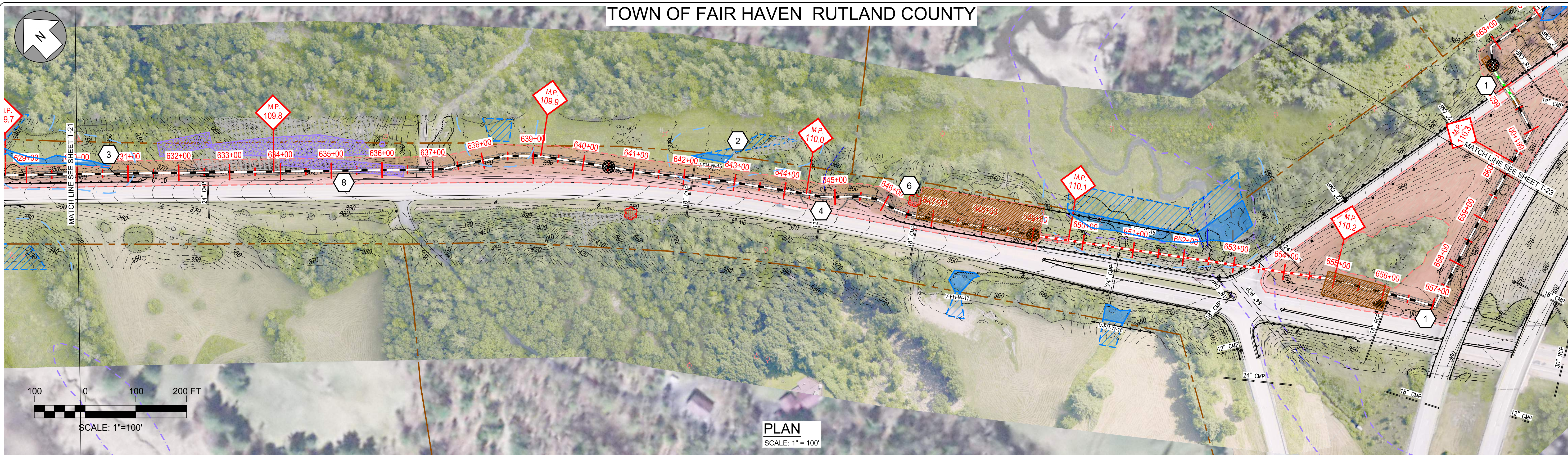


Designed	.
Drawn	.
Checked	.
Approved	.
Scale	AS NOTED

No.	Revision	Date	By	Ck	PE	PE #
A	20% ANR Submission	12/5/14	TRC	AMW		
B	EPSC & PERMITS IFCR	3/8/15	TRC	AMW		
C	ISSUED FOR USE	3/27/15	TRC	AMW		

TDI New England
NEW ENGLAND CLEAN POWER LINK
Plan & Profile - Overland Route
T-21
Prepared by: **OTRC** 9/19/14

TOWN OF FAIR HAVEN RUTLAND COUNTY

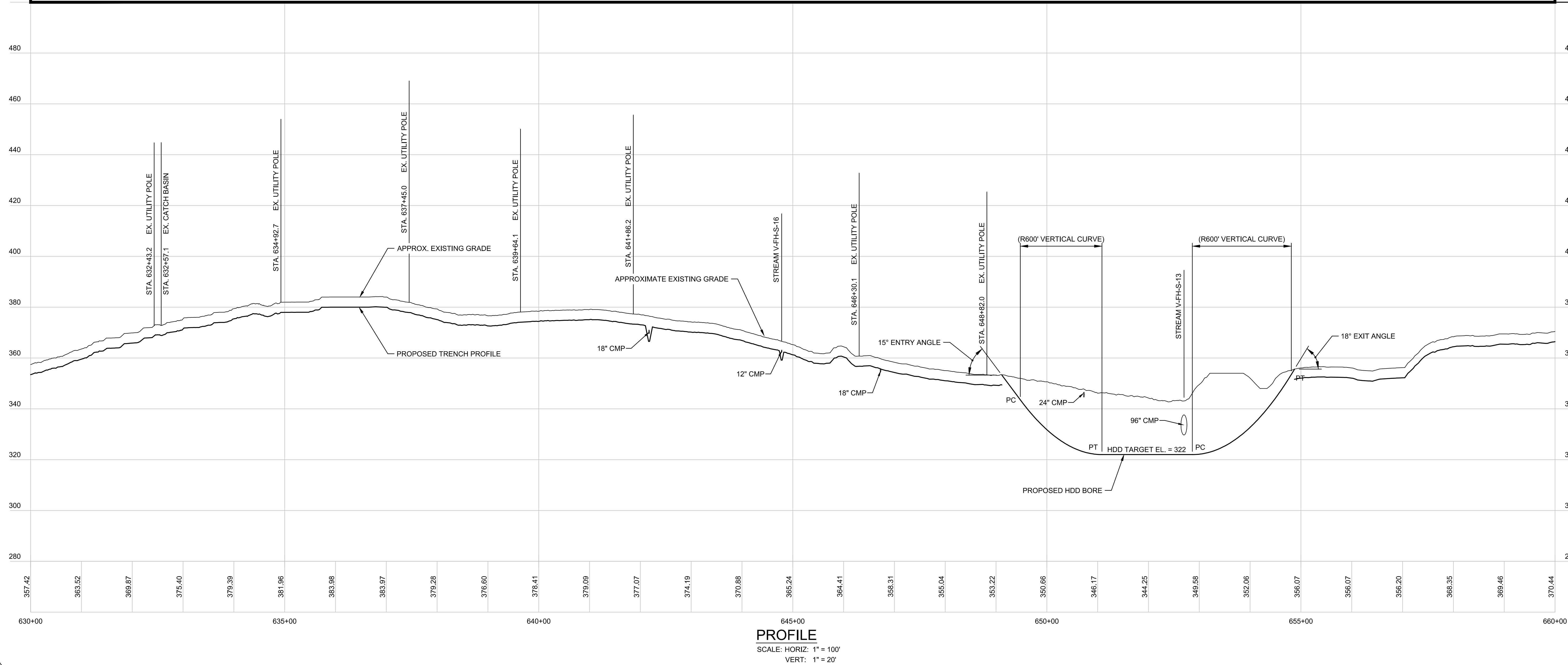


EPSC WORK NOTES

- 1 INSTALL STABILIZED CONSTRUCTION ENTRANCE. SEE TYPICAL DETAIL ON SHEET TD-7.
- 2 DEMARCATATE LIMIT OF DISTURBANCE AND INSTALL PERIMETER CONTROLS IN ACCORDANCE WITH GENERAL EPSC NOTES AND CONSTRUCTION METHOD TYPICAL DETAILS ON SHEETS G-5 AND CM-1 THRU CM-5.
- 3 WETLAND CROSSING. SEE "TYPICAL WETLAND CONSTRUCTION" ON SHEET TD-7.
- 4 OPEN TRENCH EXCAVATION OR AT-CULVERT STREAM CROSSING TO BE COMPLETED IN ACCORDANCE WITH TYPICAL DETAILS ON SHEETS TD-4 AND TD-5.
- 5 REPLACE STREAM CULVERT IN ACCORDANCE WITH TYPICAL DETAILS ON SHEETS TD-3 AND TD-4.
- 6 DEMARCATATE AND AVOID POTENTIAL ROOSTING TREE.
- 7 DEMARCATATE AND AVOID RTE POPULATION.
- 8 IMPLEMENT RTE PLANT PROTECTION PLAN.
- 9 IMPLEMENT RTE ANIMAL PROTECTION PLAN.




REFER TO SHEETS CM-1 THROUGH CM-5 FOR CONSTRUCTION METHOD DETAILS.



Designed	.
Drawn	.
Checked	.
Approved	.
Scale	AS NOTED

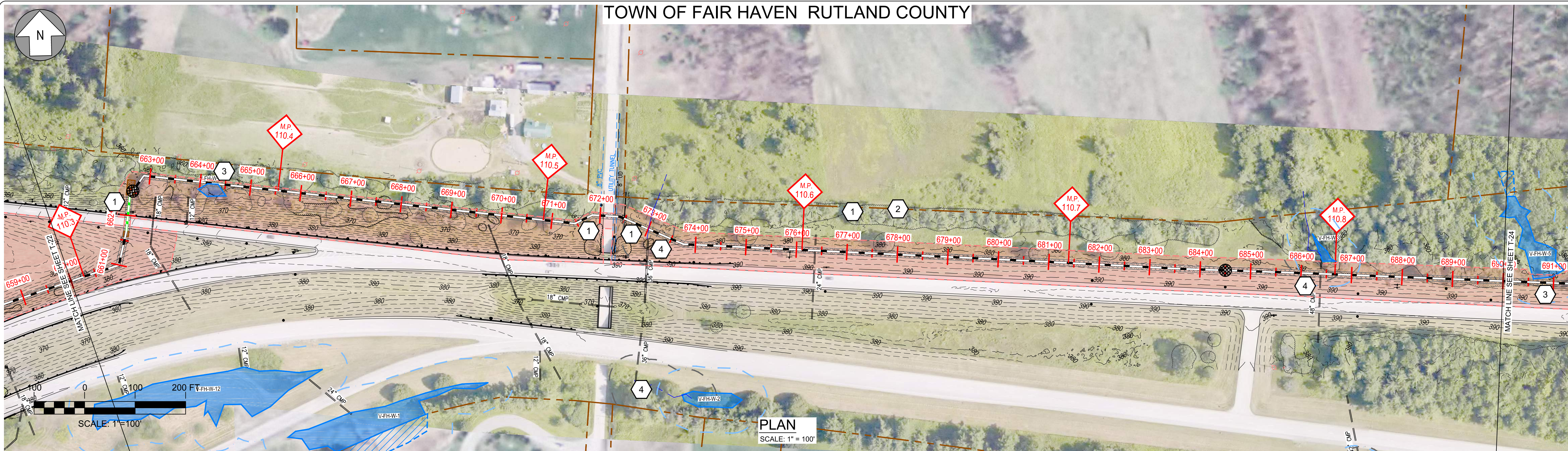
No.	Revision	Date	By	Ck	PE	PE #
A	20% ANR Submission	12/5/14	TRC	AMW		
B	EPSC & PERMITS IFCR	3/8/15	TRC	AMW		
C	ISSUED FOR USE	3/27/15	TRC	AMW		


NEW ENGLAND CLEAN POWER LINK
 TDI New England
 Plan & Profile - Overland Route
 T-22
 Prepared by:  9/19/14

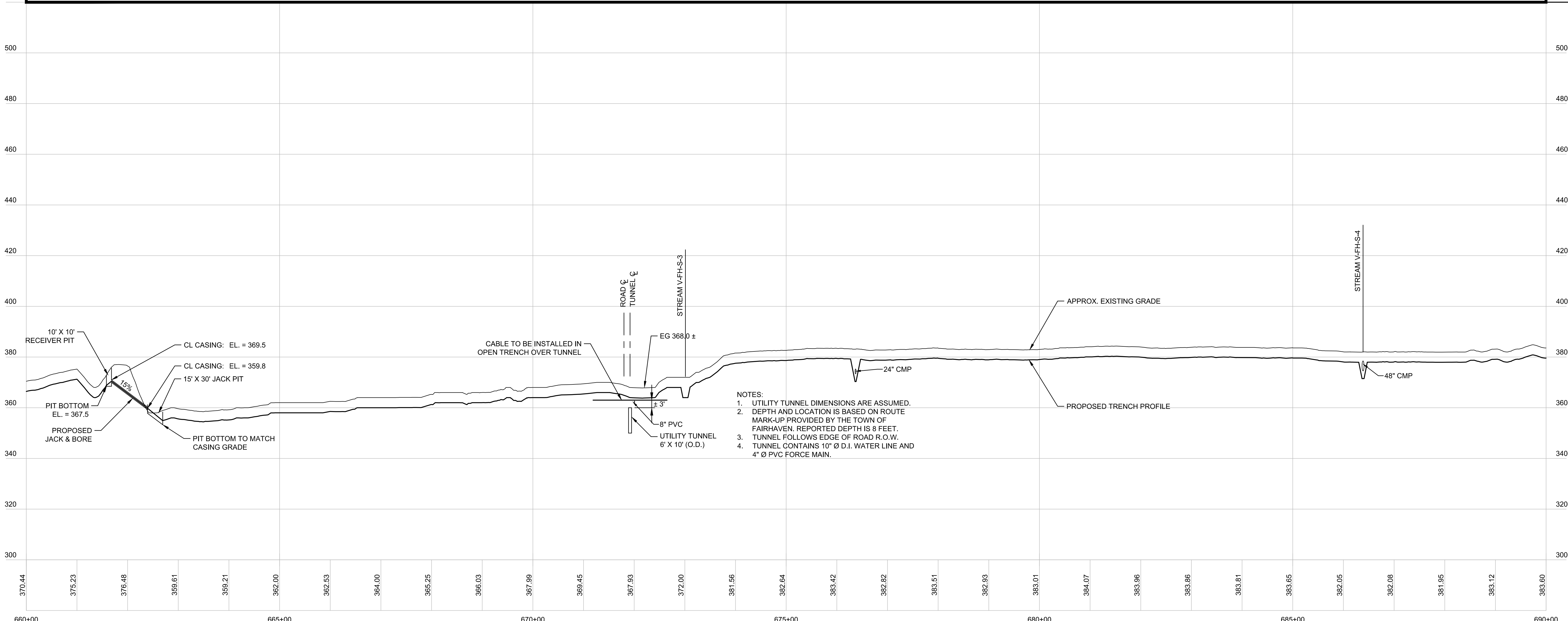
TOWN OF FAIR HAVEN RUTLAND COUNTY

EPSC WORK NOTES

- 1 INSTALL STABILIZED CONSTRUCTION ENTRANCE. SEE TYPICAL DETAIL ON SHEET TD-7.
- 2 DEMARCATÉ LIMIT OF DISTURBANCE AND INSTALL PERIMETER CONTROLS IN ACCORDANCE WITH GENERAL EPSC NOTES AND CONSTRUCTION METHOD TYPICAL DETAILS ON SHEETS G-5 AND CM-1 THRU CM-5.
- 3 WETLAND CROSSING. SEE "TYPICAL WETLAND CONSTRUCTION" ON SHEET TD-7.
- 4 OPEN TRENCH EXCAVATION OR AT-CULVERT STREAM CROSSING TO BE COMPLETED IN ACCORDANCE WITH TYPICAL DETAILS ON SHEETS TD-4 AND TD-5.
- 5 REPLACE STREAM CULVERT IN ACCORDANCE WITH TYPICAL DETAILS ON SHEETS TD-3 AND TD-4.
- 6 DEMARCATÉ AND AVOID POTENTIAL ROOSTING TREE.
- 7 DEMARCATÉ AND AVOID RTE POPULATION.
- 8 IMPLEMENT RTE PLANT PROTECTION PLAN.
- 9 IMPLEMENT RTE ANIMAL PROTECTION PLAN.



REFER TO SHEETS CM-1 THROUGH CM-5 FOR CONSTRUCTION METHOD DETAILS.



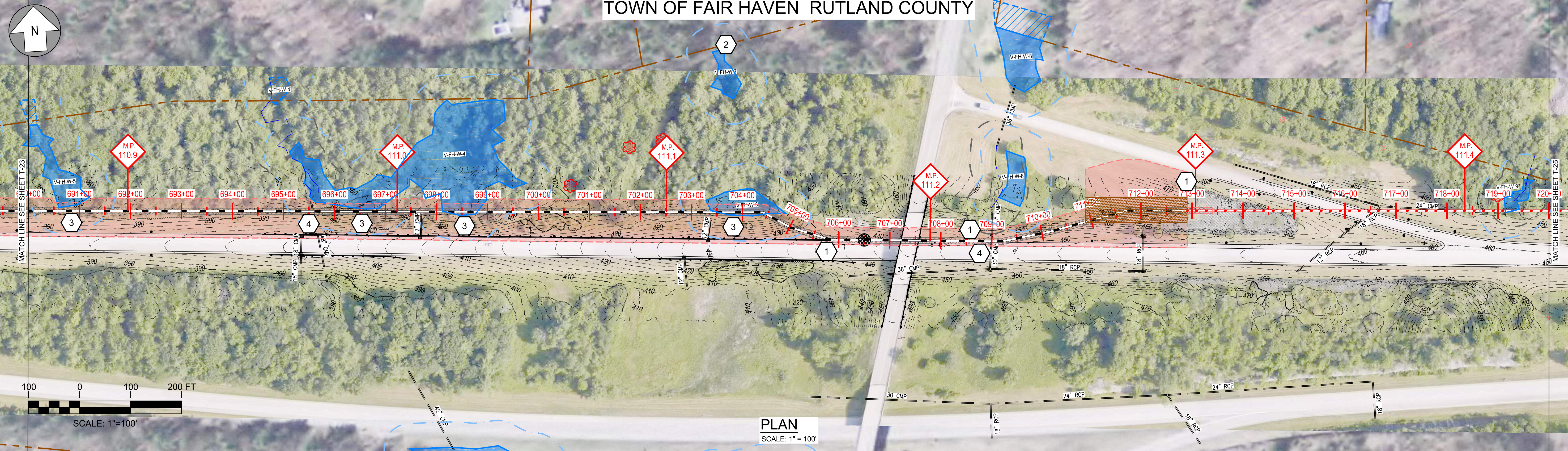
- NOTES:
1. UTILITY TUNNEL DIMENSIONS ARE ASSUMED.
 2. DEPTH AND LOCATION IS BASED ON ROUTE MARK-UP PROVIDED BY THE TOWN OF FAIRHAVEN. REPORTED DEPTH IS 8 FEET.
 3. TUNNEL FOLLOWS EDGE OF ROAD R.O.W.
 4. TUNNEL CONTAINS 10" Ø D.I. WATER LINE AND 4" Ø PVC FORCE MAIN.

Designed	.
Drawn	.
Checked	.
Approved	.
Scale	AS NOTED

No.	Revision	Date	By	Ck	PE	PE #
A	20% ANR Submission	12/5/14	TRC	AMW		
B	EPSC & PERMITS IFCR	3/8/15	TRC	AMW		
C	ISSUED FOR USE	3/27/15	TRC	AMW		

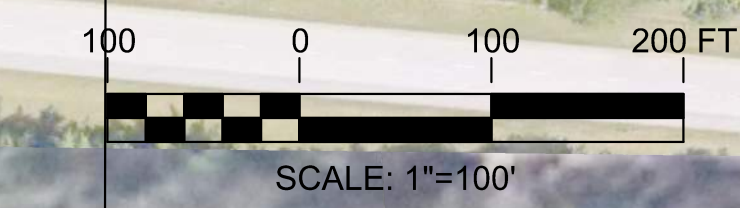
TDI New England
NEW ENGLAND CLEAN POWER LINK
Plan & Profile - Overland Route
T-23
Prepared by: **OTRC** 9/19/14

TOWN OF FAIR HAVEN RUTLAND COUNTY



EPSC WORK NOTES

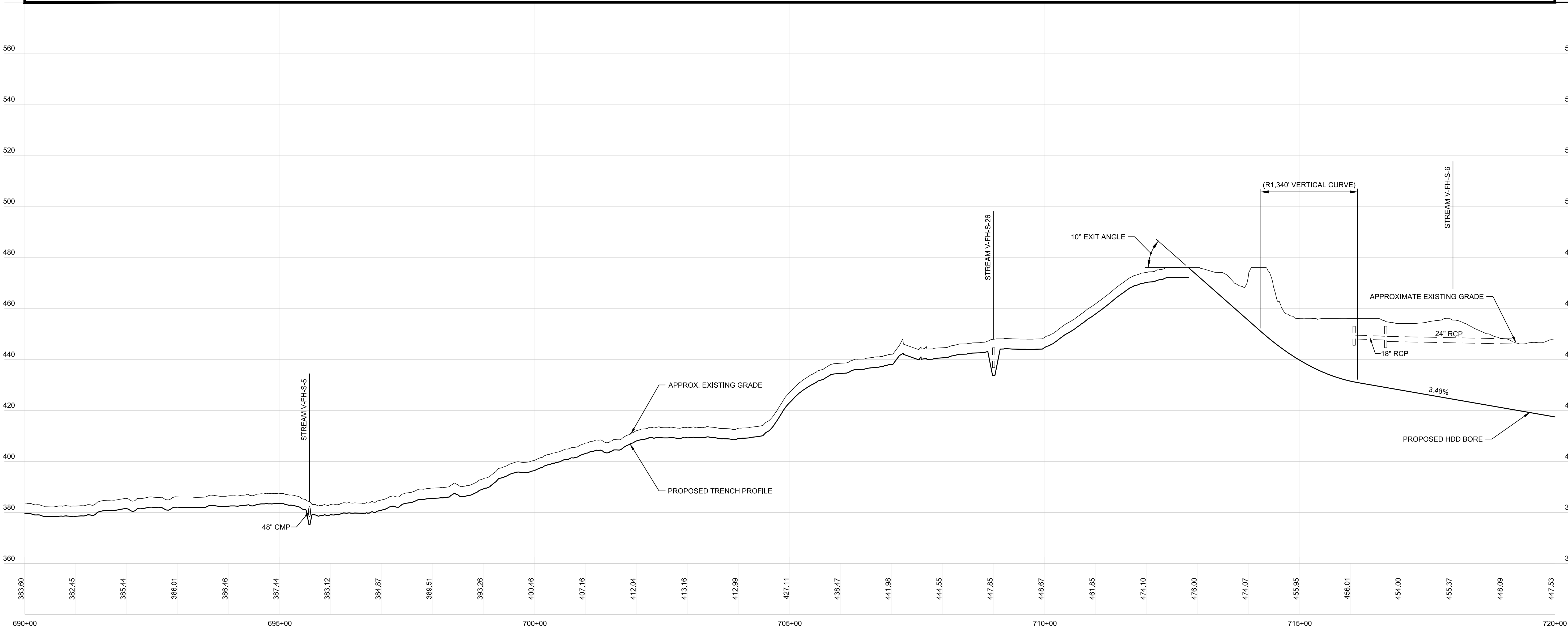
- 1 INSTALL STABILIZED CONSTRUCTION ENTRANCE. SEE TYPICAL DETAIL ON SHEET TD-7.
- 2 DEMARCATÉ LIMIT OF DISTURBANCE AND INSTALL PERIMETER CONTROLS IN ACCORDANCE WITH GENERAL EPSC NOTES AND CONSTRUCTION METHOD TYPICAL DETAILS ON SHEETS G-5 AND CM-1 THRU CM-5.
- 3 WETLAND CROSSING. SEE "TYPICAL WETLAND CONSTRUCTION" ON SHEET TD-7.
- 4 OPEN TRENCH EXCAVATION OR AT-CULVERT STREAM CROSSING TO BE COMPLETED IN ACCORDANCE WITH TYPICAL DETAILS ON SHEETS TD-4 AND TD-5.
- 5 REPLACE STREAM CULVERT IN ACCORDANCE WITH TYPICAL DETAILS ON SHEETS TD-3 AND TD-4.
- 6 DEMARCATÉ AND AVOID POTENTIAL ROOSTING TREE.
- 7 DEMARCATÉ AND AVOID RTE POPULATION.
- 8 IMPLEMENT RTE PLANT PROTECTION PLAN.
- 9 IMPLEMENT RTE ANIMAL PROTECTION PLAN.



PLAN
SCALE: 1" = 100'



REFER TO SHEETS CM-1 THROUGH CM-5 FOR CONSTRUCTION METHOD DETAILS.



PROFILE
SCALE: HORIZ: 1" = 100'
VERT: 1" = 20'

Designed	.
Drawn	.
Checked	.
Approved	.
Scale	AS NOTED

No.	Revision	Date	By	Ck	PE	PE #
A	20% ANR Submission	12/5/14	TRC	AMW		
B	EPSC & PERMITS IFCR	3/9/15	TRC	AMW		
C	ISSUED FOR USE	3/27/15	TRC	AMW		

NEW ENGLAND CLEAN POWER LINK

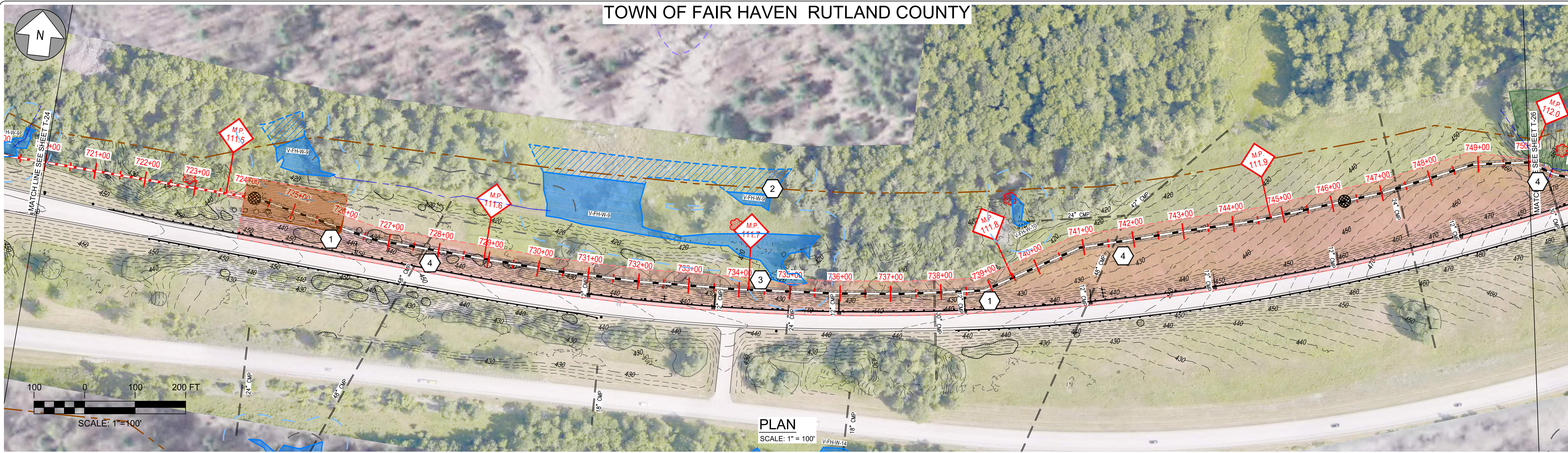
 TDI New England

 Plan & Profile - Overland Route

 T-24

 Prepared by: 9/19/14

TOWN OF FAIR HAVEN RUTLAND COUNTY

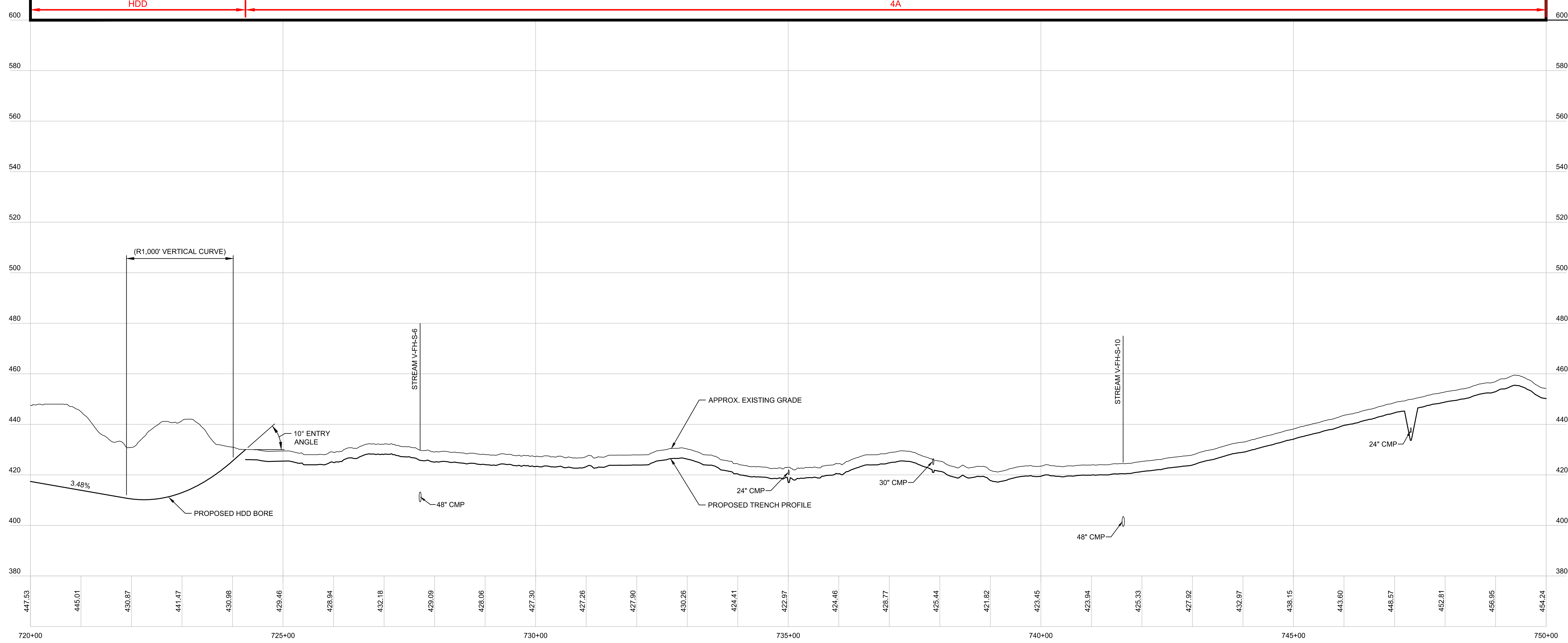


EPSC WORK NOTES

- 1 INSTALL STABILIZED CONSTRUCTION ENTRANCE. SEE TYPICAL DETAIL ON SHEET TD-7.
- 2 DEMARCATATE LIMIT OF DISTURBANCE AND INSTALL PERIMETER CONTROLS IN ACCORDANCE WITH GENERAL EPSC NOTES AND CONSTRUCTION METHOD TYPICAL DETAILS ON SHEETS G-5 AND CM-1 THRU CM-5.
- 3 WETLAND CROSSING. SEE "TYPICAL WETLAND CONSTRUCTION" ON SHEET TD-7.
- 4 OPEN TRENCH EXCAVATION OR AT-CULVERT STREAM CROSSING TO BE COMPLETED IN ACCORDANCE WITH TYPICAL DETAILS ON SHEETS TD-4 AND TD-5.
- 5 REPLACE STREAM CULVERT IN ACCORDANCE WITH TYPICAL DETAILS ON SHEETS TD-3 AND TD-4.
- 6 DEMARCATATE AND AVOID POTENTIAL ROOSTING TREE.
- 7 DEMARCATATE AND AVOID RTE POPULATION.
- 8 IMPLEMENT RTE PLANT PROTECTION PLAN.
- 9 IMPLEMENT RTE ANIMAL PROTECTION PLAN.

CONSTRUCTION METHOD

REFER TO SHEETS CM-1 THROUGH CM-5 FOR CONSTRUCTION METHOD DETAILS.



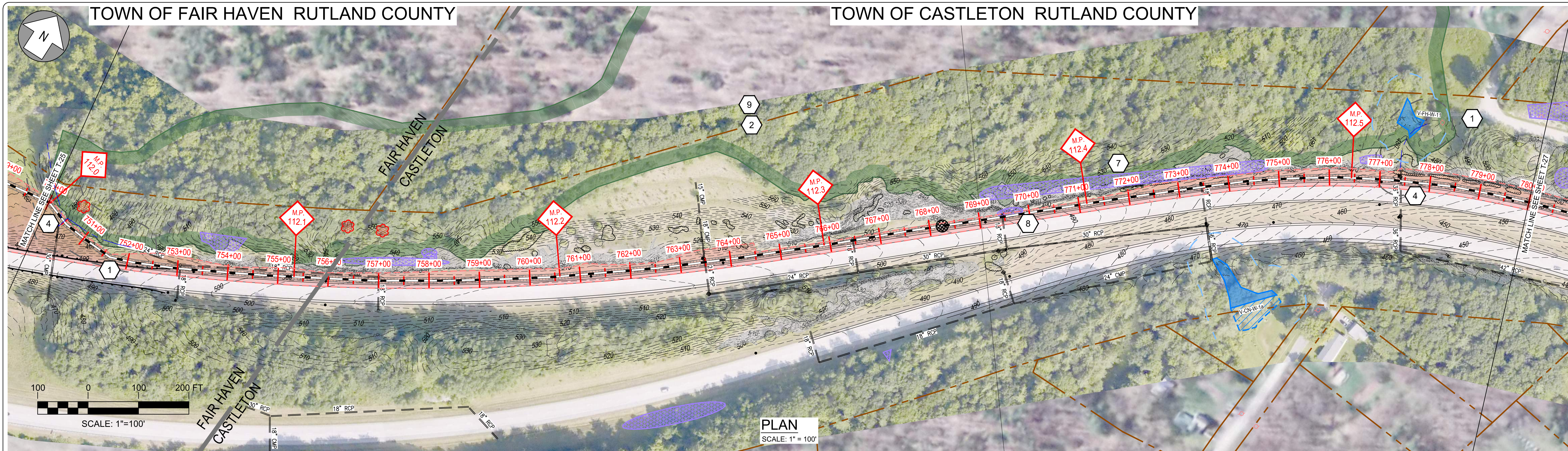
PROFILE

SCALE: HORIZ: 1" = 100'
VERT: 1" = 20'

Designed	.
Drawn	.
Checked	.
Approved	.
Scale	AS NOTED

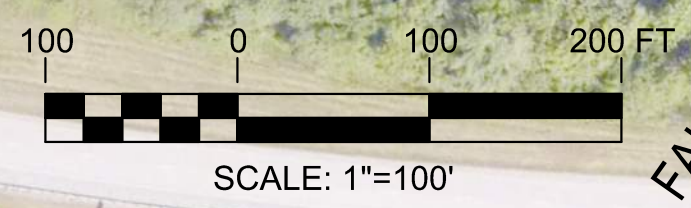
No.	Revision	Date	By	Ck	PE	PE #
A	20% ANR Submission	12/5/14	TRC	AMW		
B	EPSC & PERMITS IFCR	3/8/15	TRC	AMW		
C	ISSUED FOR USE	3/27/15	TRC	AMW		

TDI New England
NEW ENGLAND CLEAN POWER LINK
Plan & Profile - Overland Route
T-25
Prepared by: **OTRC** 9/19/14



EPSC WORK NOTES

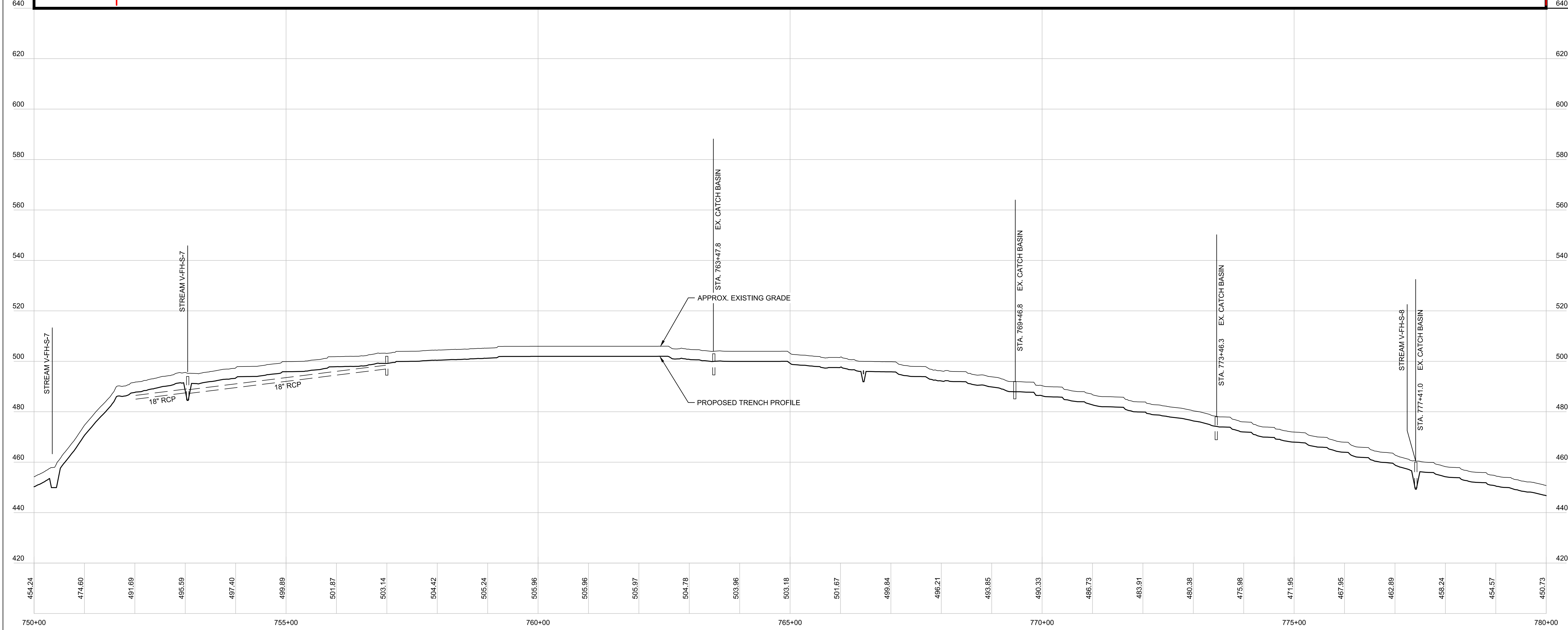
- 1 INSTALL STABILIZED CONSTRUCTION ENTRANCE. SEE TYPICAL DETAIL ON SHEET TD-7.
- 2 DEMARCATATE LIMIT OF DISTURBANCE AND INSTALL PERIMETER CONTROLS IN ACCORDANCE WITH GENERAL EPSC NOTES AND CONSTRUCTION METHOD TYPICAL DETAILS ON SHEETS G-5 AND CM-1 THRU CM-5.
- 3 WETLAND CROSSING. SEE "TYPICAL WETLAND CONSTRUCTION" ON SHEET TD-7.
- 4 OPEN TRENCH EXCAVATION OR AT-CULVERT STREAM CROSSING TO BE COMPLETED IN ACCORDANCE WITH TYPICAL DETAILS ON SHEETS TD-4 AND TD-5.
- 5 REPLACE STREAM CULVERT IN ACCORDANCE WITH TYPICAL DETAILS ON SHEETS TD-3 AND TD-4.
- 6 DEMARCATATE AND AVOID POTENTIAL ROOSTING TREE.
- 7 DEMARCATATE AND AVOID RTE POPULATION.
- 8 IMPLEMENT RTE PLANT PROTECTION PLAN.
- 9 IMPLEMENT RTE ANIMAL PROTECTION PLAN.



PLAN
SCALE: 1" = 100'

CONSTRUCTION METHOD
4A 4B

REFER TO SHEETS CM-1 THROUGH CM-5 FOR CONSTRUCTION METHOD DETAILS.



PROFILE
SCALE: HORIZ: 1" = 100'
VERT: 1" = 20'

Designed	.
Drawn	.
Checked	.
Approved	.
Scale	AS NOTED

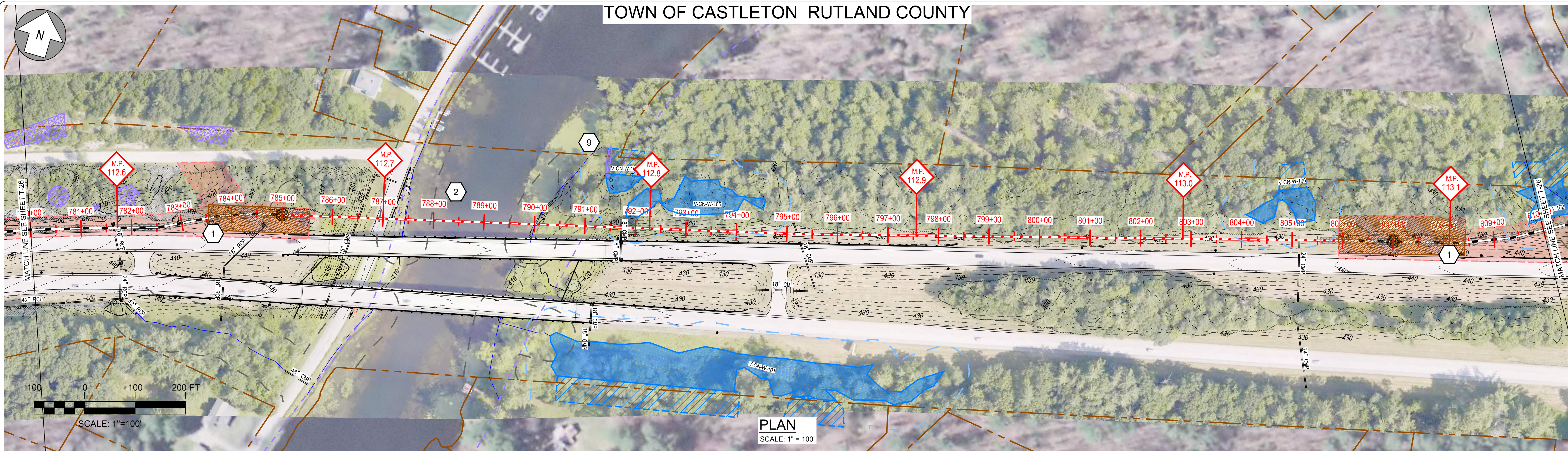
No.	Revision	Date	By	Ck	PE	PE #
A	20% ANR Submission	12/5/14	TRC	AMW		
B	EPSC & PERMITS IFCR	3/9/15	TRC	AMW		
C	ISSUED FOR USE	3/27/15	TRC	AMW		

TDI New England
NEW ENGLAND CLEAN POWER LINK
Plan & Profile - Overland Route
T-26
Prepared by: **OTRC** 9/19/14

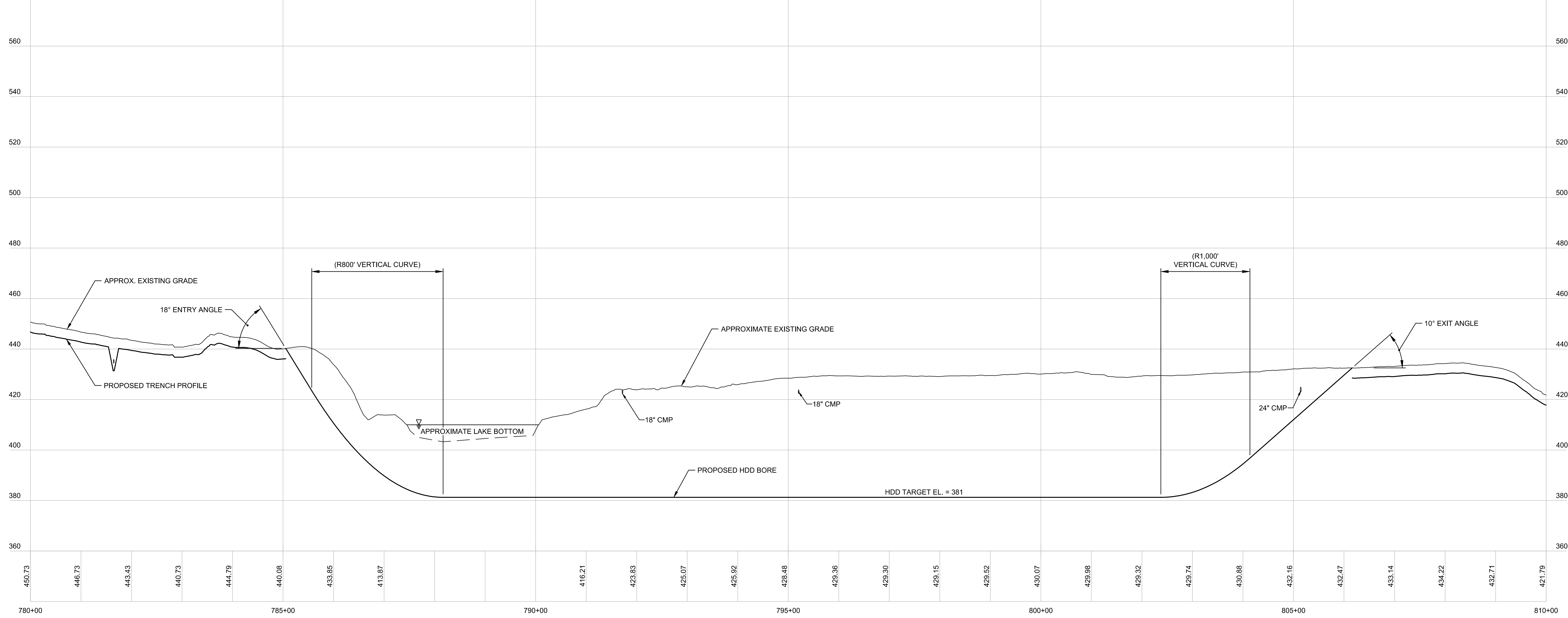
TOWN OF CASTLETON RUTLAND COUNTY

EPSC WORK NOTES

- 1 INSTALL STABILIZED CONSTRUCTION ENTRANCE. SEE TYPICAL DETAIL ON SHEET TD-7.
- 2 DEMARCATÉ LIMIT OF DISTURBANCE AND INSTALL PERIMETER CONTROLS IN ACCORDANCE WITH GENERAL EPSC NOTES AND CONSTRUCTION METHOD TYPICAL DETAILS ON SHEETS G-5 AND CM-1 THRU CM-5.
- 3 WETLAND CROSSING. SEE "TYPICAL WETLAND CONSTRUCTION" ON SHEET TD-7.
- 4 OPEN TRENCH EXCAVATION OR AT-CULVERT STREAM CROSSING TO BE COMPLETED IN ACCORDANCE WITH TYPICAL DETAILS ON SHEETS TD-4 AND TD-5.
- 5 REPLACE STREAM CULVERT IN ACCORDANCE WITH TYPICAL DETAILS ON SHEETS TD-3 AND TD-4.
- 6 DEMARCATÉ AND AVOID POTENTIAL ROOSTING TREE.
- 7 DEMARCATÉ AND AVOID RTE POPULATION.
- 8 IMPLEMENT RTE PLANT PROTECTION PLAN.
- 9 IMPLEMENT RTE ANIMAL PROTECTION PLAN.



REFER TO SHEETS CM-1 THROUGH CM-5 FOR CONSTRUCTION METHOD DETAILS.

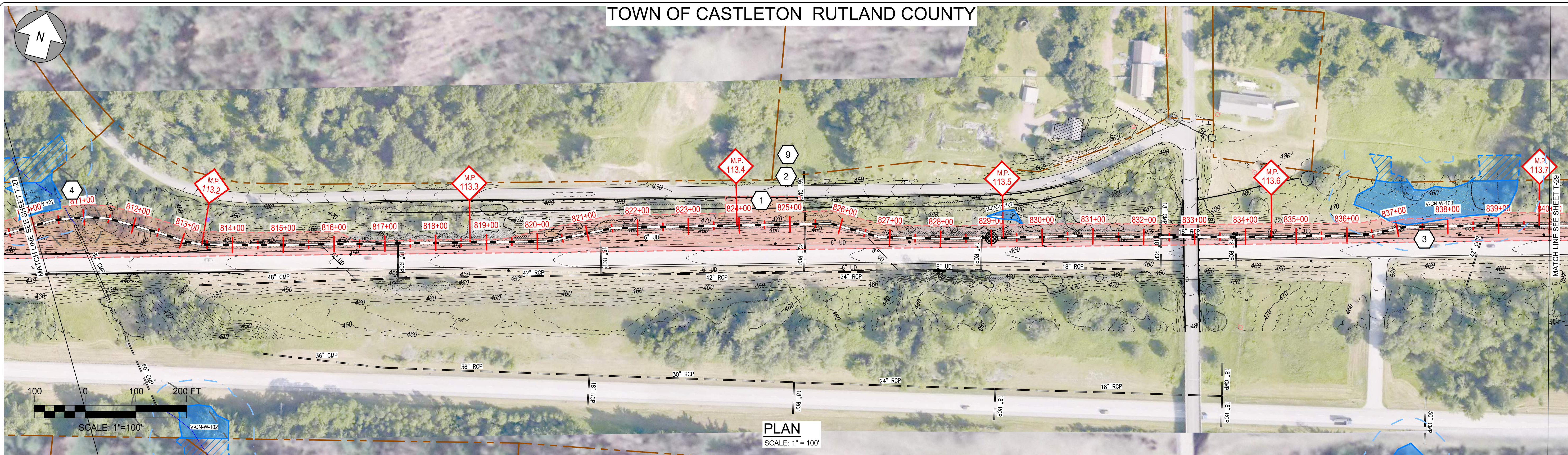


Designed	.
Drawn	.
Checked	.
Approved	.
Scale	AS NOTED

No.	Revision	Date	By	Ck	PE	PE #
A	20% ANR Submission	12/5/14	TRC	AMW		
B	EPSC & PERMITS IFCR	3/8/15	TRC	AMW		
C	ISSUED FOR USE	3/27/15	TRC	AMW		

TDI New England
NEW ENGLAND CLEAN POWER LINK
Plan & Profile - Overland Route
T-27
Prepared by: **OTRC** 9/19/14

TOWN OF CASTLETON RUTLAND COUNTY

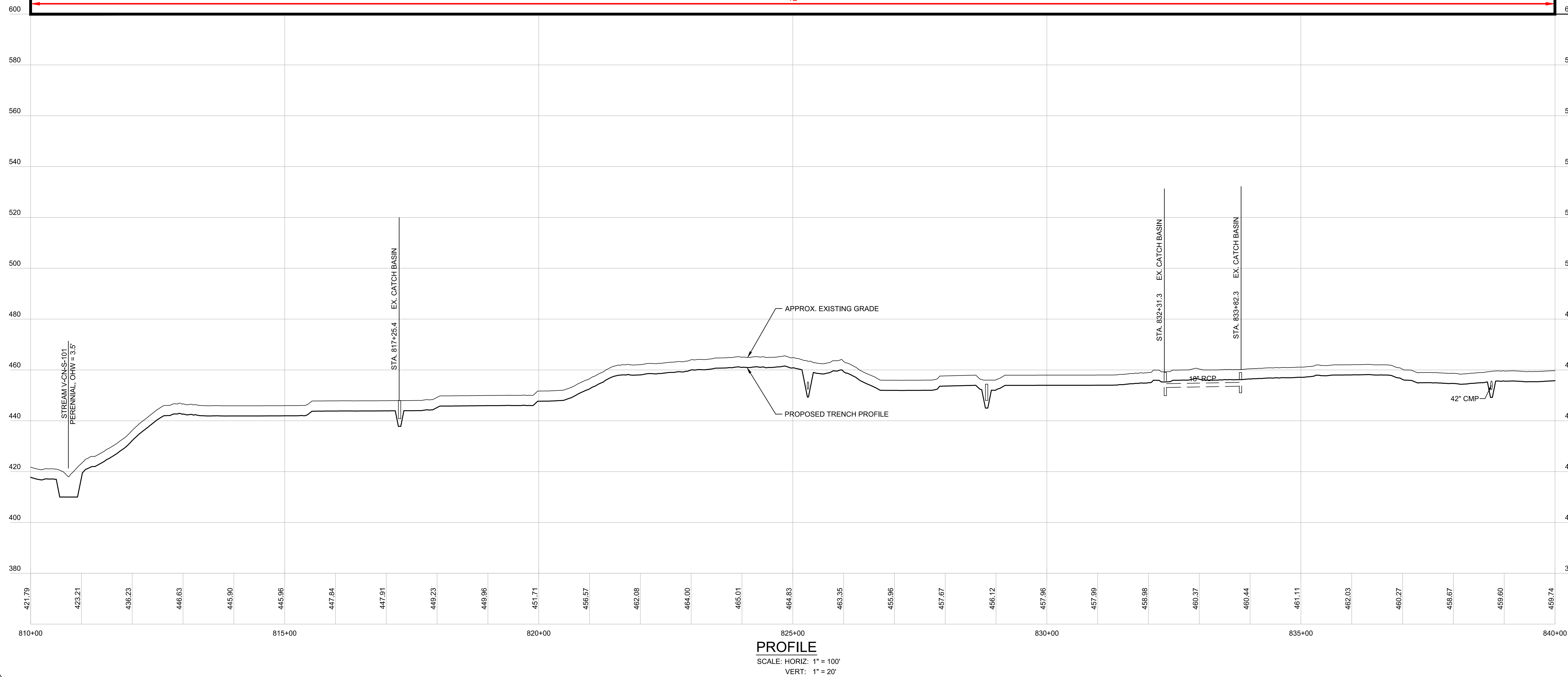


EPSC WORK NOTES

- 1 INSTALL STABILIZED CONSTRUCTION ENTRANCE. SEE TYPICAL DETAIL ON SHEET TD-7.
- 2 DEMARCATÉ LIMIT OF DISTURBANCE AND INSTALL PERIMETER CONTROLS IN ACCORDANCE WITH GENERAL EPSC NOTES AND CONSTRUCTION METHOD TYPICAL DETAILS ON SHEETS G-5 AND CM-1 THRU CM-5.
- 3 WETLAND CROSSING. SEE "TYPICAL WETLAND CONSTRUCTION" ON SHEET TD-7.
- 4 OPEN TRENCH EXCAVATION OR AT-CULVERT STREAM CROSSING TO BE COMPLETED IN ACCORDANCE WITH TYPICAL DETAILS ON SHEETS TD-4 AND TD-5.
- 5 REPLACE STREAM CULVERT IN ACCORDANCE WITH TYPICAL DETAILS ON SHEETS TD-3 AND TD-4.
- 6 DEMARCATÉ AND AVOID POTENTIAL ROOSTING TREE.
- 7 DEMARCATÉ AND AVOID RTE POPULATION.
- 8 IMPLEMENT RTE PLANT PROTECTION PLAN.
- 9 IMPLEMENT RTE ANIMAL PROTECTION PLAN.

CONSTRUCTION METHOD
4D

REFER TO SHEETS CM-1 THROUGH CM-5 FOR CONSTRUCTION METHOD DETAILS.



Designed	.
Drawn	.
Checked	.
Approved	.
Scale	AS NOTED

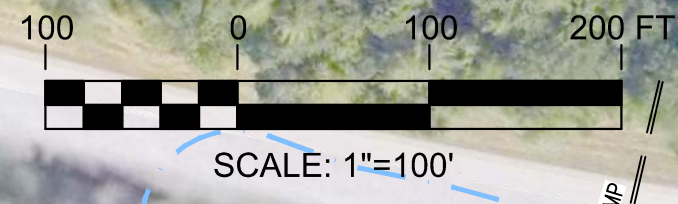
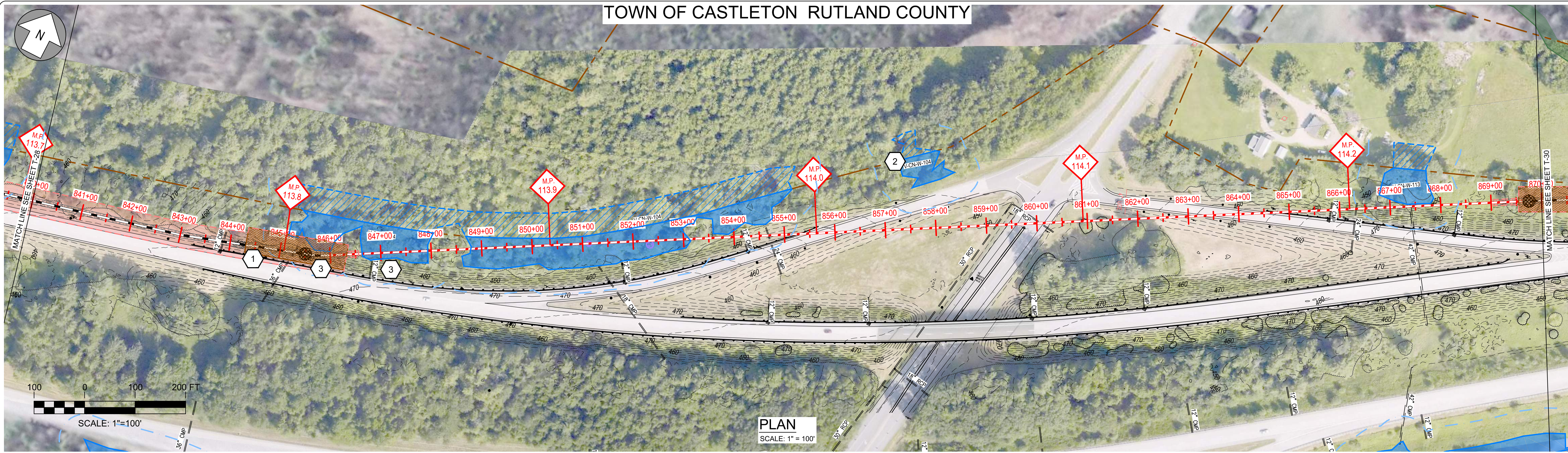
No.	Revision	Date	By	Ck	PE	PE #
A	20% ANR Submission	12/5/14	TRC	AMW		
B	EPSC & PERMITS IFCR	3/8/15	TRC	AMW		
C	ISSUED FOR USE	3/27/15	TRC	AMW		

TDI New England
NEW ENGLAND CLEAN POWER LINK
Plan & Profile - Overland Route
T-28
Prepared by: **OTRC** 9/19/14

TOWN OF CASTLETON RUTLAND COUNTY

EPSC WORK NOTES

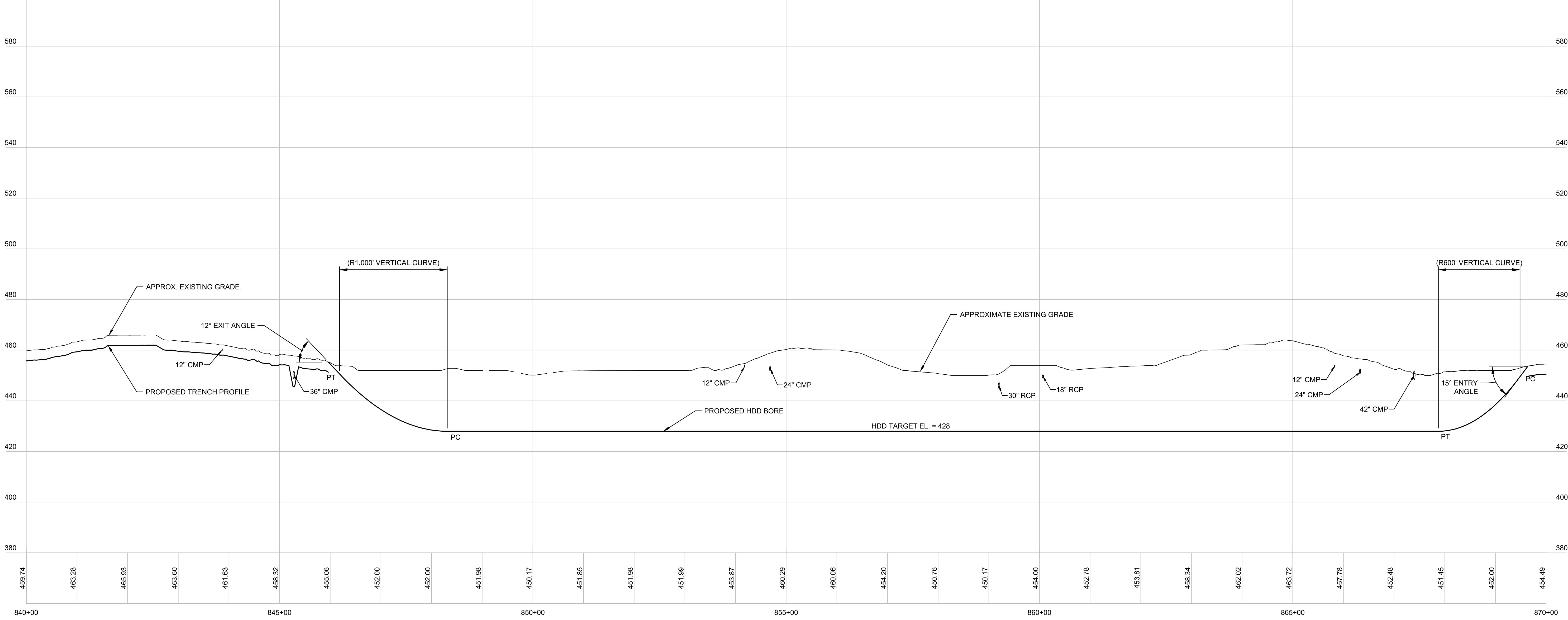
- 1 INSTALL STABILIZED CONSTRUCTION ENTRANCE. SEE TYPICAL DETAIL ON SHEET TD-7.
- 2 DEMARCATÉ LIMIT OF DISTURBANCE AND INSTALL PERIMETER CONTROLS IN ACCORDANCE WITH GENERAL EPSC NOTES AND CONSTRUCTION METHOD TYPICAL DETAILS ON SHEETS G-5 AND CM-1 THRU CM-5.
- 3 WETLAND CROSSING. SEE "TYPICAL WETLAND CONSTRUCTION" ON SHEET TD-7.
- 4 OPEN TRENCH EXCAVATION OR AT-CULVERT STREAM CROSSING TO BE COMPLETED IN ACCORDANCE WITH TYPICAL DETAILS ON SHEETS TD-4 AND TD-5.
- 5 REPLACE STREAM CULVERT IN ACCORDANCE WITH TYPICAL DETAILS ON SHEETS TD-3 AND TD-4.
- 6 DEMARCATÉ AND AVOID POTENTIAL ROOSTING TREE.
- 7 DEMARCATÉ AND AVOID RTE POPULATION.
- 8 IMPLEMENT RTE PLANT PROTECTION PLAN.
- 9 IMPLEMENT RTE ANIMAL PROTECTION PLAN.



CONSTRUCTION METHOD



REFER TO SHEETS CM-1 THROUGH CM-5 FOR CONSTRUCTION METHOD DETAILS.

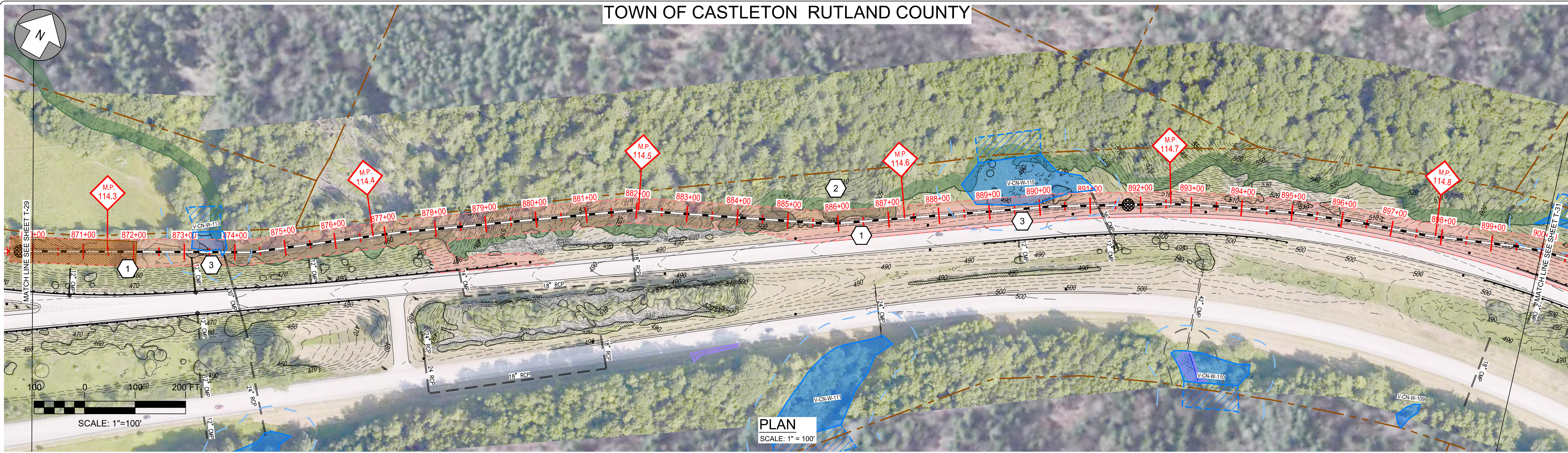


Designed	.
Drawn	.
Checked	.
Approved	.
Scale	AS NOTED

No.	Revision	Date	By	Ck	PE	PE #
A	20% ANR Submission	12/5/14	TRC	AMW		
B	EPSC & PERMITS IFCR	3/8/15	TRC	AMW		
C	ISSUED FOR USE	3/27/15	TRC	AMW		

TDI New England
NEW ENGLAND CLEAN POWER LINK
Plan & Profile - Overland Route
T-29
Prepared by: **OTRC** 9/19/14

TOWN OF CASTLETON RUTLAND COUNTY

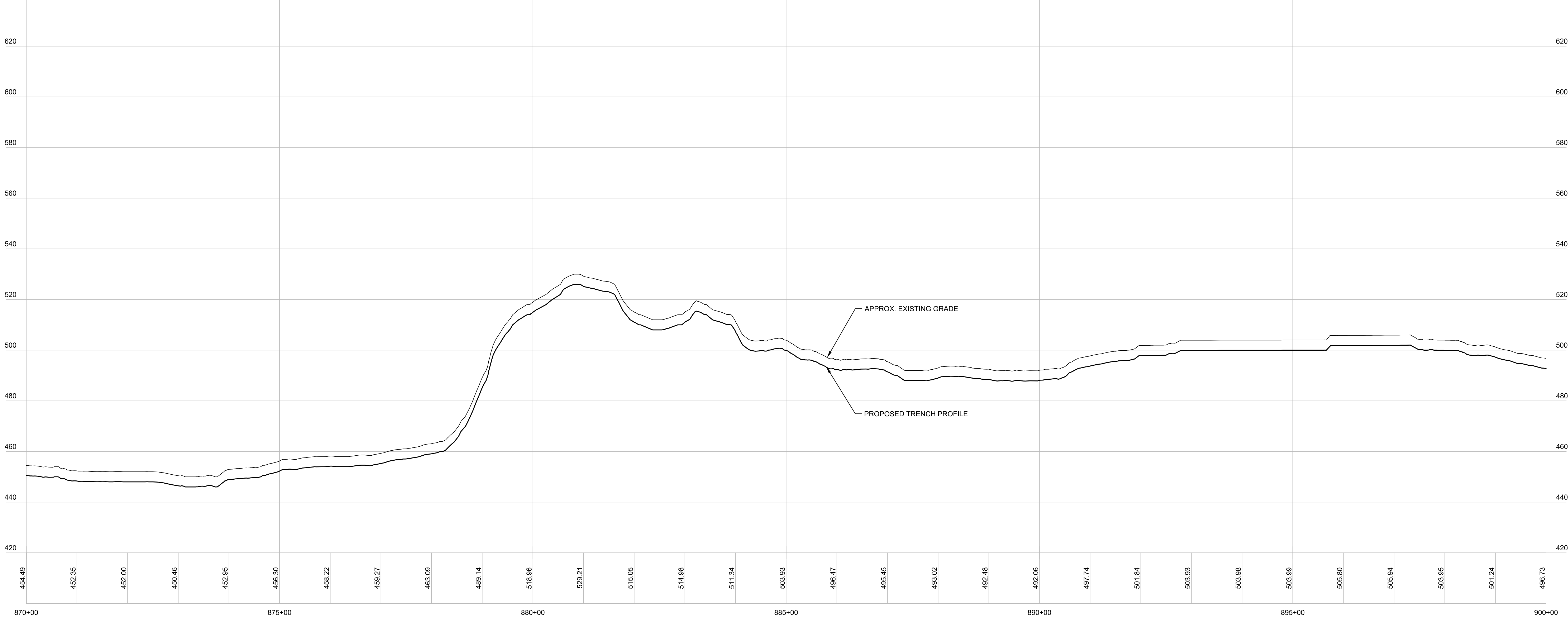


EPSC WORK NOTES

- 1 INSTALL STABILIZED CONSTRUCTION ENTRANCE. SEE TYPICAL DETAIL ON SHEET TD-7.
- 2 DEMARCATATE LIMIT OF DISTURBANCE AND INSTALL PERIMETER CONTROLS IN ACCORDANCE WITH GENERAL EPSC NOTES AND CONSTRUCTION METHOD TYPICAL DETAILS ON SHEETS G-5 AND CM-1 THRU CM-5.
- 3 WETLAND CROSSING. SEE "TYPICAL WETLAND CONSTRUCTION" ON SHEET TD-7.
- 4 OPEN TRENCH EXCAVATION OR AT-CULVERT STREAM CROSSING TO BE COMPLETED IN ACCORDANCE WITH TYPICAL DETAILS ON SHEETS TD-4 AND TD-5.
- 5 REPLACE STREAM CULVERT IN ACCORDANCE WITH TYPICAL DETAILS ON SHEETS TD-3 AND TD-4.
- 6 DEMARCATATE AND AVOID POTENTIAL ROOSTING TREE.
- 7 DEMARCATATE AND AVOID RTE POPULATION.
- 8 IMPLEMENT RTE PLANT PROTECTION PLAN.
- 9 IMPLEMENT RTE ANIMAL PROTECTION PLAN.



REFER TO SHEETS CM-1 THROUGH CM-5 FOR CONSTRUCTION METHOD DETAILS.



Designed	.
Drawn	.
Checked	.
Approved	.
Scale	AS NOTED

No.	Revision	Date	By	Ck	PE	PE #
A	20% ANR Submission	12/5/14	TRC	AMW		
B	EPSC & PERMITS IFCR	3/9/15	TRC	AMW		
C	ISSUED FOR USE	3/27/15	TRC	AMW		

NEW ENGLAND CLEAN POWER LINK

 TDI New England

 Plan & Profile - Overland Route

 T-30

 Prepared by: 9/19/14